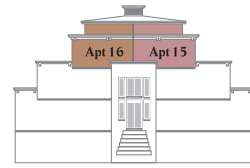


VICTORIA HOUSE

SECOND/THIRD FLOOR PENTHOUSES



VICTORIA HOUSE



SECOND FLOOR PENTHOUSES

APARTMENT 15 (137.0 SQ.M / 1,475 SQ.FT)

LIVING	8.66m x 7.37m	28'5" x 24'2" (to door)*
MASTER BED	5.66m x 3.25m	18'7" x 10'8" *
BED 1	3.96m x 4.14m	13'0" x 13'7" *
BED 2	3.40m x 3.25m	11'2" x 10'8"

*maximum

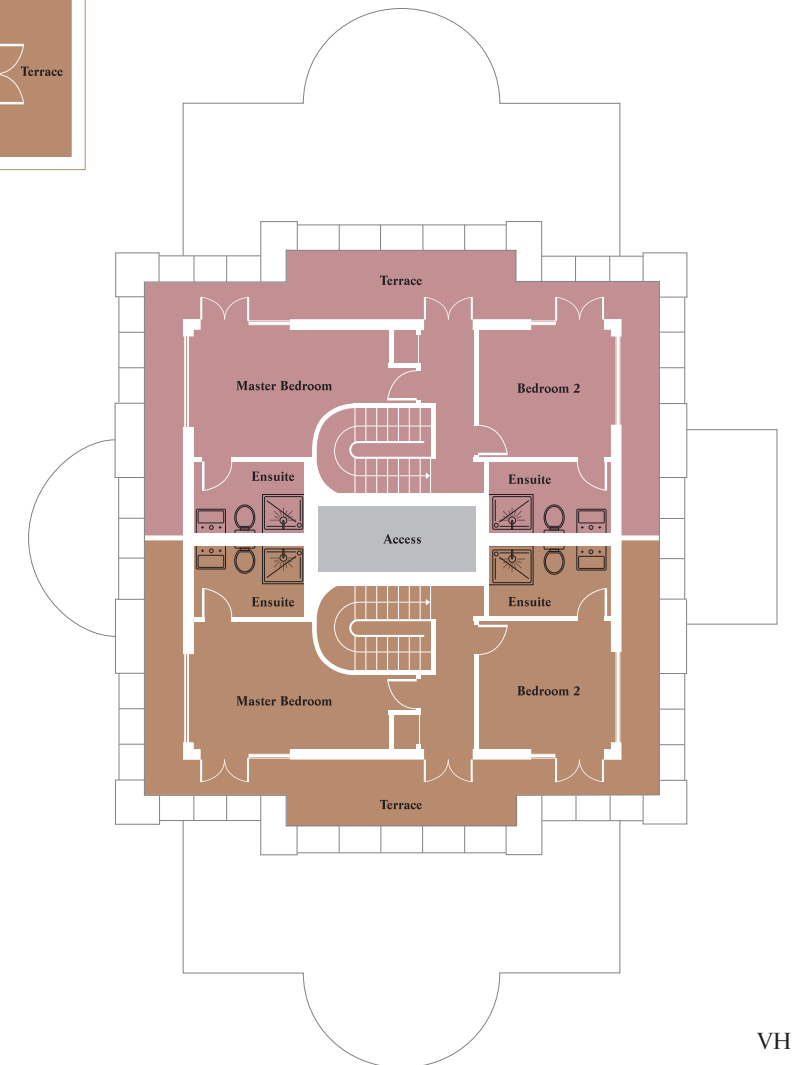
APARTMENT 16 (129.3 SQ.M / 1,392 SQ.FT)

LIVING	9.70m x 4.14m	31'10" x 13'7" *
MASTER BED	5.66m x 3.25m	18'7" x 10'8" *
BED 1	3.91m x 3.78m	12'10" x 12'5"
BED 2	3.40m x 3.25m	11'2" x 10'8"

*maximum



SECOND FLOOR PENTHOUSES



THIRD FLOOR PENTHOUSES

